

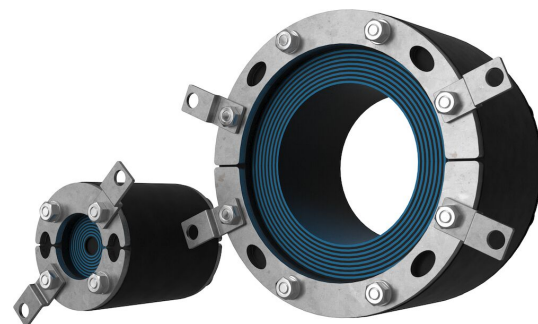


Roxtec RS UG™-tätning

Rund tätning för enstaka kablar och rör som går in i byggnader via grunden.

Roxtec RS UG™ är en tvådelad tätning som installeras kring enstaka kablar eller rör som går in i byggnader via grunden. Den skapar en långlivad barriär som skyddar mot översvämningar, gas, fukt och gnagare. Genomföringen kan installeras även i våta miljöer och miljöer med rinnande vatten. Den klarar extrema böjningsvinklar för kabeln och har en tolerans på +5 mm mot håltagningen samt en indikator som visar när en komprimerad tätning har uppnåtts. Genomföringen kan installeras i hylsor, ledningsrör och kärnborrade hål.

- Gnagarresistent
- Snabb och enkel installation
- Enkel att underhålla och inspektera



Produktegenskaper



Vattentät



Gastät



IP/UL NEMA

Konstruktion för installation



Betong

Monteringsätt



Befintligt hål



Befintlig hylsa

Klassningar & certifikat

Täthet

- Gas: 0,3 bar (konstant)
- Vatten: 0,3 bar (konstant)
- IP 68

Information om tätningskomponenter

Tätningskomponenter



RS UG™-tätning



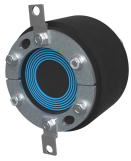
smörjmedel

Detaljerad information finns på [roxtec.com](https://www.roxtec.com).

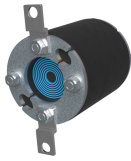


Förkonfigurerade genomföringskit

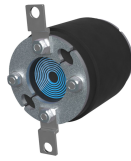
mm/kg



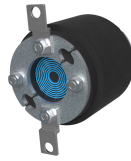
RS 110 UG



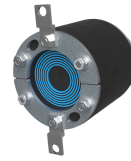
RS 70 UG



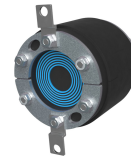
RS 75 UG



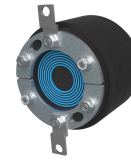
RS 80 UG



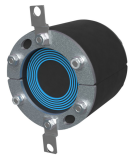
RS 90 UG



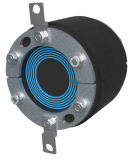
RS 95 UG



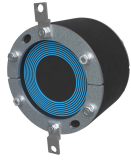
RS 100 (4") 24-53 UG



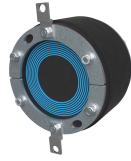
RS 100 (4") UG



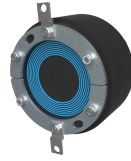
RS 105 UG



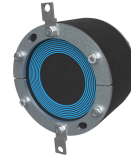
RS 125 (5") UG



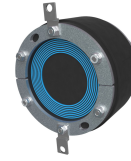
RS 130 UG



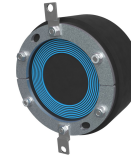
RS 135 55-88 UG



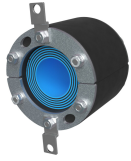
RS 135 UG



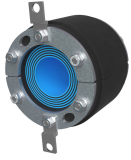
RS 140 UG



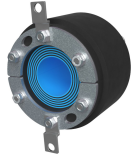
RS 145 UG



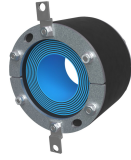
RS 100 (4") UG WOC



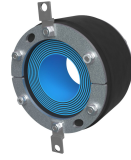
RS 105 UG WOC



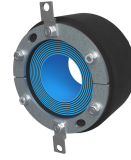
RS 110 UG WOC



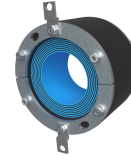
RS 125 (5") UG WOC



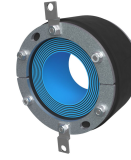
RS 130 UG WOC



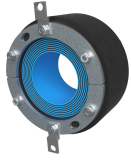
RS 135 55-88 UG WOC



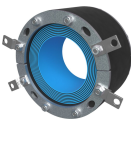
RS 135 UG WOC



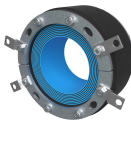
RS 140 UG WOC



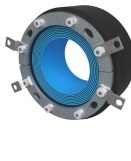
RS 145 UG WOC



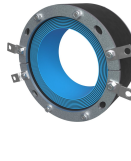
RS 150 UG WOC



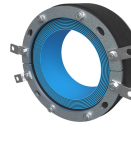
RS 155 UG WOC



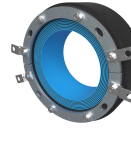
RS 160 UG WOC



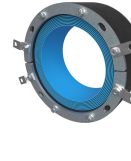
RS 185 UG WOC



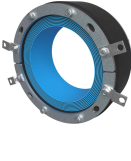
RS 190 UG WOC



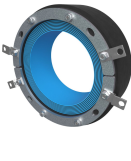
RS 195 UG WOC



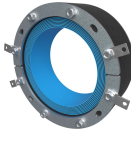
RS 200 (8") UG WOC



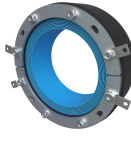
RS 205 UG WOC



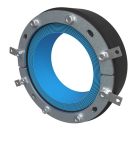
RS 210 UG WOC



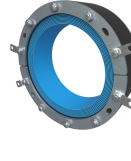
RS 225 UG WOC



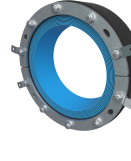
RS 230 UG WOC



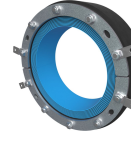
RS 235 UG WOC



RS 250 UG WOC



RS 255 UG WOC



RS 260 UG WOC



Titel	Konfigurering	Öppningens mått Ø	Vikt	Art. nr
RS 110 UG	1x (39.0-63.0)	110 - 115	1.2	186252
RS 70 UG	1x (9.0-33.0)	70 - 75	0.6	167234
RS 75 UG	1x (9.0-33.0)	75 - 80	0.6	186247
RS 80 UG	1x (9.0-33.0)	80 - 85	0.7	186248
RS 90 UG	1x (24.0-53.0)	90 - 95	0.9	167263
RS 95 UG	1x (24.0-53.0)	95 - 100	1	186249
RS 100 (4") 24-53 UG	1x (24.0-53.0)	100 - 105	1	186250
RS 100 (4") UG	1x (39.0-63.0)	100 - 105	1.1	167236
RS 105 UG	1x (39.0-63.0)	105 - 110	1.2	186251
RS 125 (5") UG	1x (55.0-88.0)	125 - 130	1.6	167638
RS 130 UG	1x (55.0-88.0)	130 - 135	1.6	186253
RS 135 55-88 UG	1x (55.0-88.0)	135 - 140	1.7	186254
RS 135 UG	1x (65.0-98.0)	135 - 140	1.8	167240
RS 140 UG	1x (65.0-98.0)	140 - 145	2	186255
RS 145 UG	1x (65.0-98.0)	145 - 150	2	186256
RS 100 (4") UG WOC	1x (39.0-63.0)	100 - 105	1	167265
RS 105 UG WOC	1x (39.0-63.0)	105 - 110	1	186257
RS 110 UG WOC	1x (39.0-63.0)	110 - 115	1.1	186258
RS 125 (5") UG WOC	1x (55.0-88.0)	125 - 130	1.4	167639
RS 130 UG WOC	1x (55.0-88.0)	130 - 135	1.4	186259
RS 135 55-88 UG WOC	1x (55.0-88.0)	135 - 140	1.5	186260
RS 135 UG WOC	1x (65.0-98.0)	135 - 140	1.6	167266
RS 140 UG WOC	1x (65.0-98.0)	140 - 145	1.7	186261
RS 145 UG WOC	1x (65.0-98.0)	145 - 150	1.8	186262
RS 150 UG WOC	1x (80.0-113.0)	150 - 155	1.8	167246
RS 155 UG WOC	1x (80.0-113.0)	155 - 160	1.9	186263
RS 160 UG WOC	1x (80.0-113.0)	160 - 165	2	186264
RS 185 UG WOC	1x (114.0-148.0)	185 - 190	2.3	167258
RS 190 UG WOC	1x (114.0-148.0)	190 - 195	2.4	186265
RS 195 UG WOC	1x (114.0-148.0)	195 - 200	2.6	186266
RS 200 (8") UG WOC	1x (130.0-163.0)	200 - 205	2.5	178151
RS 205 UG WOC	1x (130.0-163.0)	205 - 210	2.7	186267
RS 210 UG WOC	1x (130.0-163.0)	210 - 215	2.8	186268
RS 225 UG WOC	1x (146.0-179.0)	225 - 230	3.4	178166
RS 230 UG WOC	1x (146.0-179.0)	230 - 235	3.5	186269
RS 235 UG WOC	1x (146.0-179.0)	235 - 240	3.7	186270
RS 250 UG WOC	1x (171.0-204.0)	250 - 255	3.8	178178
RS 255 UG WOC	1x (171.0-204.0)	255 - 260	4	186271
RS 260 UG WOC	1x (171.0-204.0)	260 - 265	4.1	186272

The product information provided by Roxtec does not release the purchaser of the Roxtec system, or part thereof, from the obligation to independently determine the suitability of the products for the intended process, installation and/or use.

Roxtec gives no guarantee for the Roxtec system or any part thereof and assumes no liability for any loss or damage whatsoever, whether direct, indirect, consequential, loss of profit or otherwise, occurred or caused by the Roxtec systems or installations containing components not manufactured by an authorized manufacturer and/or occurred or caused by the use of the Roxtec system in a manner or for an application other than for which the Roxtec system was designed or intended.

Roxtec expressly excludes any implied warranties of merchantability and fitness for a particular purpose and all other express or implied representations and warranties provided by statute or common law. User determines suitability of the Roxtec system for intended use and assumes all risk and liability in connection therewith. In no event shall Roxtec be liable for indirect, consequential, punitive, special, exemplary or incidental damages or losses.

The Roxtec products are offered and sold in accordance with the conditions of the Roxtec General Terms of Sales. The latest version of the Roxtec General Terms of Sales can be downloaded from <https://www.roxtec.com/en/about-us/about-roxtec/general-terms-of-sales/>

We reserve the right to make changes to the product and technical information without further notice. Any errors in print or entry are no claims for indemnity. The content of this publication is the property of Roxtec International AB and is protected by copyright.

This document was generated on: 2024-04-16